



# Conference Program



@Qmethod

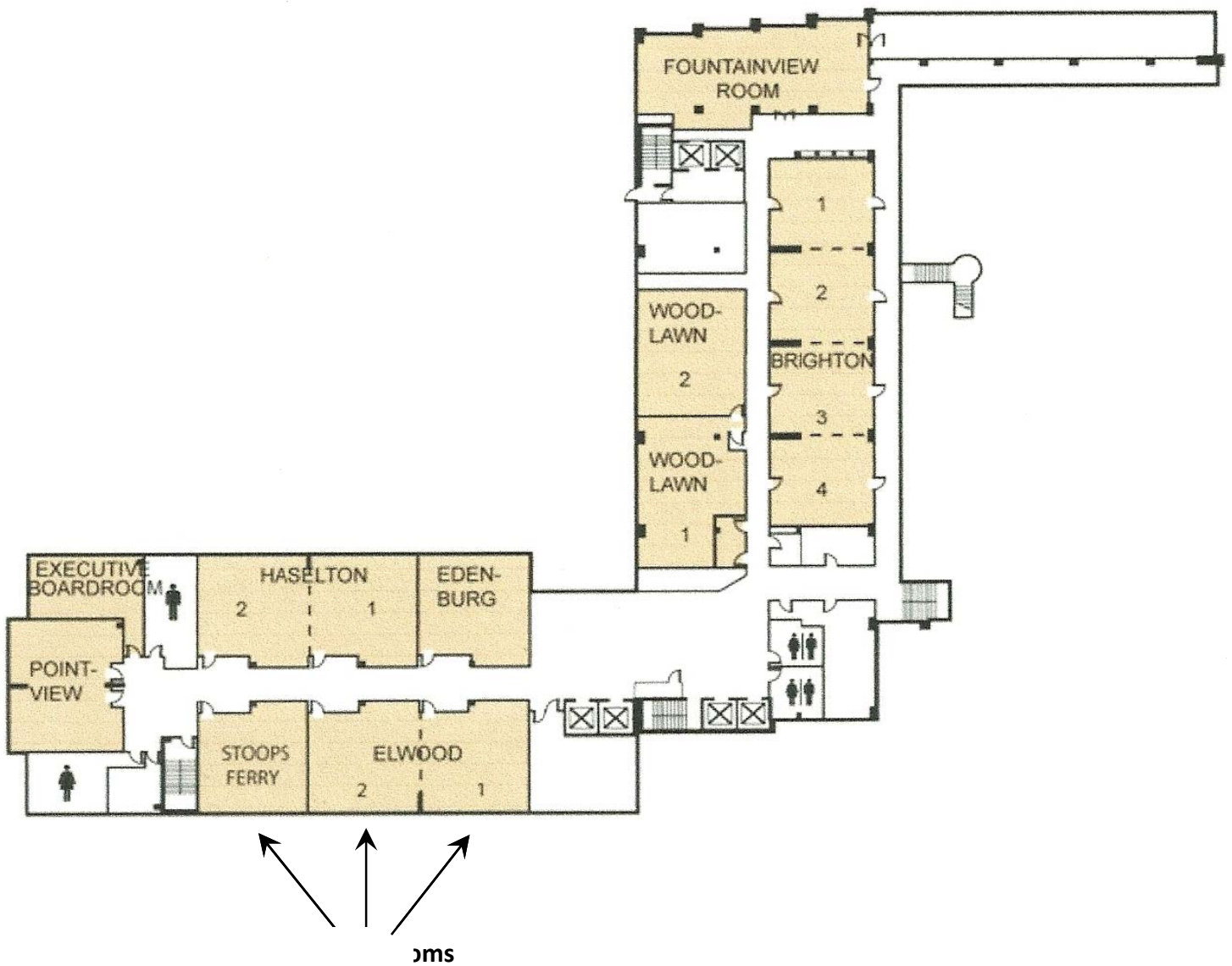
#14s12

*Program of the 28th Annual ISSSS Q methodology Conference  
Pittsburgh, PA - 5-8 September 2012*

**Venue information**

The conference will be held at: Sheraton Station Square Hotel  
300 W Station Square Dr. Pittsburgh, PA 15219  
Phone: (412) 261-2000

**Floor plan, 2<sup>nd</sup> floor**



*Program of the 28th Annual ISSSS Q methodology Conference  
Pittsburgh, PA - 5-8 September 2012*

**Program at a glance**

<i>Wednesday, 5 September</i>	1.00-2.30pm	Introduction to Q Workshop
	2.30-3.00pm	<i>Coffee break</i>
	3.00-4.30pm	Advanced Q Workshop
	4.30-5.30pm	<i>Student/Novice Meeting</i>
	6.00-7.30pm	<i>Opening Reception, Hard Rock Cafe</i>
<i>Thursday, 6 September</i>	9.00-9.15am	Welcome & Opening
	9.15-10.45am	Simultaneous Panels 1
	10.45-11.00am	<i>Coffee break</i>
	11.00-12.30pm	Simultaneous Panels 2
	12.30-1.30pm	<i>Lunch (on your own)</i>
	1.30-3.00pm	Keynote
	3.00-3.15pm	<i>Coffee break</i>
	3.15-4.45pm	Simultaneous Panels 3
4.45-6.15pm	Simultaneous Panels 4	
<i>Friday, 7 September</i>	9.00-10.30am	Simultaneous Panels 5
	10.30-10.45am	<i>Coffee break</i>
	10.45-12.15pm	Simultaneous Panels 6
	12.15-1.30pm	<i>Lunch (on your own)</i>
	1.30-3.00pm	Plenary Session
	3.00-3.15pm	<i>Coffee break</i>
	3.15-4.45pm	Simultaneous Panels 7
	4.45-6.15pm	ISSSS Business Meeting
	7.30pm	<i>Banquet, Waterfront Room</i>
<i>Saturday, 8 September</i>	9.00-10.30am	Simultaneous Panels 8
	10.45-12.15pm	Panel of Experts
	6.00pm	<i>Baseball Game</i>

*Program of the 28th Annual ISSSS Q methodology Conference  
Pittsburgh, PA - 5-8 September 2012*

**Simultaneous Panels at a glance**

		<b>Elwood I</b>	<b>Elwood II</b>	<b>Stoops Ferry</b>
<i>Thursday, 6 September</i>	<b>Simultaneous Panels 1</b> 9.15-10.45am	Education	Q & Pop Culture	Communication
	<b>Simultaneous Panels 2</b> 10.45-12.15pm	Education	Methodology	Policy issues
	<b>Simultaneous Panels 3</b> 3.15-4.45pm	Education	Methodology	Journalism & Law
	<b>Simultaneous Panels 4</b> 4.45-6.15pm	Education	Methodology	Social & Policy Networks
<i>Friday, 7 September</i>	<b>Simultaneous Panels 5</b> 9.00-10.30am	Education	Health & Nursing	Education
	<b>Simultaneous Panels 6</b> 10.45-12.15pm	Education	Health & Nursing	Education
	<b>Simultaneous Panels 7</b> 3.15-4.45pm	Education	Leadership	-
<i>Saturday, 8 September</i>	<b>Simultaneous Panels 8</b> 9.00-10.30am	Education	Agriculture	Education

## Keynote

From “Hell with the Lid Taken Off” to “America’s Most Livable City”: A Brief and Selective History of Pittsburgh, “City at the Point”

**Dr. Timothy Cuff, Westminster College**

*Thursday, 1.30-3.00pm*



Timothy Cuff, Associate Professor of History, joined Westminster’s full-time faculty during the 2000-2001 academic year. He teaches US history courses, World Geography, and Inquiry 111. His research interests focus on the 19th century United States and the outcomes of economic development. His book, *The Hidden Cost of Economic Development: The Biological Standard of Living in Antebellum Pennsylvania*, was published by Ashgate in 2005. His current research, some in collaboration with advanced undergraduate students, addresses anthropometric history as well as the influenza pandemic of 1918.

---

## Panel of Experts

*Saturday, 10.45-12.15pm*

The Q-Method List Serve (<http://listserv.kent.edu/archives/q-method.html>) offers Q Methodology researchers away to communicate internationally. Typically, novices email the list asking for help regarding various aspects of performing Q Methodology studies including dealing with questions from dissertation committees and journal reviewers that are sometimes not relevant to Q Methodology. Questions often involve the use of specific software, online sorting, grid structure, concourse creation, and methodological concerns like sample size. Many who study and use Q are isolated and often rely on the list to ask various questions about Q. This panel offers a live version of this type of scenario similar to what was presented at the ISSSS 2010 and 2011 conferences. After some introductions, members of the panel will answer questions submitted prior to the conference or via the questions board at the conference venue; if time permits, additional questions will be taken from the audience. All Q methodologists, or potential Q methodologists, are encouraged to attend.

***Please submit your questions*** for the panel via email ([sramlo@uakron.edu](mailto:sramlo@uakron.edu)). It would be best to offer general questions about Q rather than specific to a particular study (e.g. question that is not of interest to other Q researchers because it is so specific to your study such as questions about specific statements being used within a Q sample, for instance).

## **Stephenson Award 2012**

### ***Professor Wendy Stainton Rogers***

The International Society for the Scientific Study of Subjectivity (ISSSS) is pleased to announce Professor Wendy Stainton Rogers as the recipient of the Stephenson Award (2012). The Stephenson Award is for those who have a life time commitment to Q Methodology and is the highest award offered by the ISSSS.



Wendy receives this award for her outstanding contributions to promoting Q methodology, especially the support she has given to students and researchers, increasing their theoretical understanding of Q and developing the skills required to conduct Q studies. Championing Q was a joint venture with Rex Stainton Rogers, up until he died in 1999. Rex's legacy lives on, mainly in the scholarship of his graduate students, and their outstanding achievements.

In 1986 Wendy and Rex attended the 2nd ISSSS Conference, confessed to their previous sins as R Methodologists, met Will Stephenson (having read Steve Brown's 1980 book) and, in Wendy's words, their lives changed forever. In 1987 they got funding from the Social Science Research Council for a conference dedicated to promoting Q methodology, including inviting Will to be its Keynote speaker. It was held in April 1989, just before he died.

A lot of Wendy's contributions have been 'behind the scenes', supervising PhDs and Masters students, and offering serious amounts of time to those getting started with Q. The books, chapters and papers she has written, seminars given, editorial advice she has painstakingly provided and training sessions she has organized and run have all had a real influence on the growing number of scholars in the UK who teach Q, do Q studies and get them published in high quality journals.

It my personal pleasure and honor to be able to add this award to the achievements of Professor Wendy Stainton Rogers.



Rachel Baker PhD

President international Society for the Scientific Study of Subjectivity (ISSSS)

*Program of the 28th Annual ISSSS Q methodology Conference  
Pittsburgh, PA - 5-8 September 2012*

**Donald J. Brenner Outstanding Paper Award – 2011 Conference Winners**

Two winners were selected from 19 papers submitted at the 2011 ISSSS Conference meeting in Birmingham, UK for the Donald J. Brenner Outstanding Paper Award by an awards committee selected and approved by the Executive Committee. Our winners:

**Marshall A. Baker, Oklahoma State University**

Examining the Agricultural Education Fishbowl: Understanding Perceptions of Agricultural.

**Tim Deignan, Independent Researcher**

A novel way to develop policy and practice.

Both papers have been published in volume 35, number 2 (Jan 2012) of *Operant Subjectivity*.

---

The **Donald J Brenner Outstanding Paper Award** is named in honor of ISSSS's first president. This award will be given annually at the ISSSS conference for an outstanding paper presented at the conference.

**Submission process:** At each conference of ISSSS, participants will be invited to submit a completed conference paper that has been written for their accepted ISSSS conference presentation. Hardcopies of papers must be submitted at the conference by the author(s). A box will be available at the registration desk. Electronic copies must also be submitted to the person currently holding the position of ISSSS Advisor - Dr Susan Ramlo (sramlo@uakron.edu) - within one month of the conference. Electronic submissions must be the same as those submitted at the conference. Papers must include contact information including email of the first (lead) author. Papers submitted for the award should not be submitted to any journal prior to the announcement of the award winner, approximately three (3) months after the conference.

**Criteria for papers:** Papers should have a maximum of 12,000 words and be accompanied by a 200-word abstract. Manuscripts should follow the 'instructions for authors' submitting their manuscript to *Operant Subjectivity: The International Journal of Q Methodology* (<http://operantsubjectivity.org/os/contributions>). All copy should be typed, double-spaced in Times New Roman 12-point font with notes, references, tables, and figures appearing at the end of the manuscript. All tables and figures should be included in the electronic file. Submissions are assumed to be original work for publication in the society journal *Operant Subjectivity: The International Journal of Q Methodology* and not under consideration elsewhere. Papers should contain sufficient references to the Q methodology literature. Papers applying Q methodology within a research study should detail the various aspects of the research, from concourse development to factor interpretation.

**Award committee:** The awards committee is headed by the ISSSS Advisor, per the ISSSS By Laws. The committee will consist of an additional five (5) members of ISSSS, selected and approved by the ISSSS executive board. The editor of the society journal, *Operant Subjectivity: The International Journal of Q Methodology*, will typically be selected to be a member of the awards committee.

**Award Criteria:** The awards committee will review the submissions and will select the best paper. The award will give priority to those papers that focus on unique applications of Q methodology or unique theoretical perspectives related to Q methodology. Quality of references, writing, and factor interpretation will be among those elements judged.

**The Award:** The award will consist of recognition at the next ISSSS conference, publication in the society journal *Operant Subjectivity: The International Journal of Q Methodology* and is accompanied by a certificate and monetary award.

See also: <http://qmethod.org/qconference/current/awards>



*Program of the 28th Annual ISSSS Q methodology Conference  
Pittsburgh, PA - 5-8 September 2012*

**Wednesday, 5 September**

<b>Elwood I</b>	
1.00-2.30pm	Introduction to Q Workshop Susan E. Ramlo, <i>The University of Akron</i>
1.00-2.30pm	<i>Coffee break</i>
3.00-4.30pm	Advanced Q Workshop Diane Montgomery, <i>Oklahoma State University</i>
4.30-5.30pm	Student/Novice Meeting Job van Exel, <i>Erasmus University Rotterdam</i>
6.00-7.30pm	Opening Reception, <i>Hard Rock Cafe</i>

**Thursday, 6 September**

	<b>Elwood I</b>	<b>Elwood II</b>	<b>Stoops Ferry</b>
9.00-9.15am <b>Welcome &amp; Opening</b>	Rachel Baker, <i>president ISSSS</i> Jim Rhoads, <i>Conference Host</i> Job van Exel, <i>Program Chair</i>		
9.15-10.45am <b>Simultaneous Panels 1</b>	<b>Education</b> <i>Chair: John B. Nicholas</i>	<b>Panel: Q &amp; Pop Culture</b> <i>Chair: James Rhoads</i>	<b>Communication</b> <i>Chair: Jason Zenor</i>
	College students' perceptions about personal strengths: An exploration of meaning using images <i>Virginia Gravina - Oklahoma State University</i>	Q and Pop Culture <i>James C. Rhoads, Ulf Oesterle, Dennis F. Kinsey, Rachel Somerstein - Westminster College, Syracuse University</i>	Strategic or Tactical: The Characteristics of The Ideal Senior Government Communicator <i>Terence Flynn - McMaster University</i>
	Factors Contributing to Early College High School Student Persistence <i>Katie Cerrone, John B. Nicholas, Susan Ramlo - The University of Akron</i>		Decoding "The Code": Audience Readings of Morality, Morbidity and Muder in Dexter <i>Jason Zenor, Steven Granelli – SUNY, Oswego</i>
	Investigating student preferences of faculty teaching methods in relation to their own learning styles <i>Wesley Carpenter - The University of Akron</i>		
10.45-11.00am	<i>Coffee break</i>		



*Program of the 28th Annual ISSSS Q methodology Conference  
Pittsburgh, PA - 5-8 September 2012*

	<b>Elwood I</b>	<b>Elwood II</b>	<b>Stoops Ferry</b>
11.00-12.30pm <b>Simultaneous Panels 2</b>	<p><b>Education</b> <i>Chair: Susan E. Ramlo</i></p> <p>Student Views on the Use of Technology in Computer Information Systems (CIS) Courses <i>John B. Nicholas, Susan E. Ramlo, Chris Kuhn - The University of Akron</i></p> <p>Student beliefs about vocabulary acquisition in EFL <i>Alessandra Sartori Nogueira; Linda Gentry El-Dash - University of Campinas (Unicamp)</i></p> <p>The Assent to Learn of Engineering Technology Students <i>Roland Arter - The University of Akron</i></p>	<p><b>Methodology</b> <i>Chair: Bryan D. Midgley</i></p> <p>Stephenson's Subjectivity from the Standpoint of Behaviorism <i>Bryan D. Midgley, Dennis J. Delprato - McPherson College and Eastern Michigan University</i></p> <p>On the Representation of Q Methodology: Some Rhetorical Reflections on the Vicissitudes of William Stephenson's Science of Subjectivity <i>James Good – Durham University</i></p>	<p><b>Policy issues</b> <i>Chair: Dan B. Thomas</i></p> <p>The Qlash of Ideas: A Q Study of Twentieth Century International Relations <i>Jessie Rumsey, Steven Brown - Kent State University</i></p> <p>Subjectivity And The Economic Inequality Conundrum: The Case For A Q - Methodological Reframing <i>Dan B. Thomas, Larry R. Baas - Wartburg College and Valparaiso University</i></p> <p>Using Q to explore the subjective meanings of Muslim Social Identity in South Africa <i>Saloshni Muthal, Gillian Finchilescu - University of the Witwatersrand</i></p>
12.30-1.30pm	<i>Lunch (on your own)</i>		
1.30-3.00pm <b>Keynote</b>	From "Hell with the Lid Taken Off" to "America's Most Livable City": A Brief and Selective History of Pittsburgh, "City at the Point" <i>Dr. Timothy Cuff, Associate Professor of History, Westminster College</i>		
3.00-3.15pm	<i>Coffee break</i>		
3.15-4.45pm <b>Simultaneous Panels 3</b>	<p><b>Education</b> <i>Chair: Carrie L. Fister</i></p> <p>Reading English as a foreign language from the point of view of Brazilian high school students: A Q Methodological Study <i>Linda Gentry El-Dash, Eliane Fernandes Azzari, Liv Fernandes - State University of Campinas, Brazil</i></p> <p>Meaning construction in career choices among university graduates <i>Hannah Owens Svennungsen - The Norwegian University of Science and Technology</i></p> <p>Examining Clinical Education Experiences of Athletic Training Students <i>Carrie L. Fister, Laura A. Richardson, Susan Ramlo - The University of Akron</i></p>	<p><b>Methodology</b> <i>Chair: Stentor Danielson</i></p> <p>Contextual challenges using Q methodology in comparative research <i>Arlene Arstad Thorsen, Ingunn T. Ellingsen, Misty Steele, Diane Montgomery - University of Stavanger and Oklahoma State University</i></p> <p>Conceptualizing Complete Streets: Visual Q <i>Perry D. Gross, Andrew Blanchard - Atkins North America</i></p> <p>Many versions of a single story: perspectives on public engagement with wildfire management in New Jersey <i>Stentor Danielson - Slippery Rock University</i></p>	<p><b>Journalism &amp; Law</b> <i>Chair: Mark Popovich</i></p> <p>On the Shared Subjectivity of Value in Legal Decision and Discourse: The Application of Q Methodology in Analytic Jurisprudence <i>Daniel Behn - University of Dundee</i></p> <p>Editing in the Digital Era: A Q-methodological Study of Professional Journalists' Viewpoint of Editing in an Era of Technological Change <i>Reshonda Scott - Florida A&amp;M University</i></p> <p>An Examination of Journalist Motives in Covering Tragedy and Trauma <i>Mark H. Masse, Mark Popovich, Dennis Kinsey - Ball State University, Ball State University, Syracuse University</i></p>

*Program of the 28th Annual ISSS Q methodology Conference  
Pittsburgh, PA - 5-8 September 2012*

	<b>Elwood I</b>	<b>Elwood II</b>	<b>Stoops Ferry</b>
4.45-6.15pm <b>Simultaneous Panels 4</b>	<b>Education</b> <i>Chair: Patricia Hobbs</i>  A Q-Methodological Study: Examining Teachers' Beliefs, Perceptions, and Attitudes about Cultural Competence <i>Patricia Hobbs, Matt Militello - Harnett County Schools</i>  Faculty perspective of a campus visit program <i>Joanne K. Salay - Kent State University at Stark</i>	<b>Methodology</b> <i>Chair: Rachel Baker</i>  Revealing children's experiences and emotions through Q Methodology <i>Arlene Arstad Thorsen, Ingunn T. Ellingsen, Ingunn Størksen - Center for Behavioral Research, University of Stavanger</i>  An Exploratory Study of Positive User Reactions to Q-Sort Techniques <i>Chris D. Fluckinger, Michelle R. H. Brodke - Bowling Green State University Firelands</i>  Q methods, Empirical ethics and public policy <i>Rachel Baker - Glasgow Caledonian University</i>	<b>Social &amp; Policy Networks</b> <i>Chair: Michael Stricklin</i>  The Q-Study As A Bouy On The Sea Of Social Networking Data: A Complex Analysis In A Complex Context <i>Michael Stricklin, Gustavo Said, Woods Stricklin - Federal University of Piaui, Portland Community College</i>  Q study: Does social networking lead to loneliness? <i>Byung Lee - Max Negin Elon University</i>
7.30pm	<i>Meet-up for dinner (on your own)</i>		

**Friday, 7 September**

	<b>Elwood I</b>	<b>Elwood II</b>	<b>Stoops Ferry</b>
9.00-10.30am <b>Simultaneous Panels 5</b>	<b>Education</b> <i>Chair: Klara Øverland</i>  Daycare Staff Emotions and Coping Related to Children of Divorce: A Q Methodological Study <i>Klara Øverland, Ingunn Størksen, Edvin Bru, Arlene Thorsen - University of Stavanger</i>  Exploiting the qualitative potential of Q methodology: Its applicability in a post---colonial study <i>Lydia E Carol-Ann Burke, University of Toronto</i>  Q Methodology As An Approach for Grassroots Community Development <i>Chris Janson, Matt Militello - University of North Florida, North Carolina State University</i>	<b>Health &amp; Nursing</b> <i>Chair: Job van Exel</i>  Q-methodology to explore attitudes towards adherence in recently transplanted kidney patients <i>M. Tielen, J. van Exel, M. Laging, T. van Gelder, W. Weimar, E. Massey - Erasmus MC, Erasmus University Rotterdam</i>  Questioning marketing authorization procedure and efficacy criteria: Views from general population, patients, oncologists and health decision makers in the context of advanced cancer <i>Christel Protiere, Noémie Jeannin - INSERM UMR 912</i>  Attributes Of Sustained Recovery From Substance Use Disorders: Key Impressions Of Persons In Long---Term Recovery <i>Onaje M. Salim - Argosy University</i>	<b>Education</b> <i>Chair: Steven R. Brown</i>  Using Q to Catalyze and Focus Academic Committee Work <i>Travis W. Schermer - The College of Saint Rose</i>  It's a Shame: Student Perspectives on Academic Misconduct <i>Brian Wink, Steven Henderson, Donald Coe, Ann Read - Southampton Solent University</i>  Harvesting Suggestions: A Strategy for Promoting Policies Designed to Improve Academic Life for International Students <i>Han Zhang, Mayagul S. Satlykgylyjova, Merfat Almuhajiri, Steven R. Brown - Kent State University</i>
10.30-10.45am	<i>Coffee break</i>		

*Program of the 28th Annual ISSSS Q methodology Conference  
Pittsburgh, PA - 5-8 September 2012*

	<b>Elwood I</b>	<b>Elwood II</b>	<b>Stoops Ferry</b>
10.45-12.15pm <b>Simultaneous Panels 6</b>	<p><b>Education</b> <i>Chair: Susan E. Ramlo</i></p> <p>Teacher Expectations of First Grade Students <i>Misty R. Steele, Diane Montgomery - Oklahoma State University</i></p> <p>Pre-service elementary teachers' perceptions of inquiry science teaching and the nature of science <i>Kelly M. Sparks - Western Michigan University</i></p> <p>Views of Obesity Among Exercise Science students: Investigating the Effect of an Exercise and Weight Control Curriculum <i>Laura A. Richardson, Carrie L. Fister, Susan E. Ramlo - The University of Akron</i></p>	<p><b>Health &amp; Nursing</b> <i>Chair: Noori Akhtar-Danesh</i></p> <p>Enhancing Collaboration between Primary Care and Public Health in Canada <i>Noori Akhtar-Danesh, Ruta Valaitis, Linda O'Mara, Patricia Austin - McMaster University</i></p> <p>Differentiating Physical Discipline from Abuse: A Comparison of Chinese American Mothers and Mandated Nurse Reporters of Child Abuse <i>Grace Ho, Deborah Gross - Johns Hopkins University School of Nursing</i></p> <p>Q Methodology: Exploring Older Adults Personal and Perceived Views of Their Own Memory and Cognition <i>Krystal L. Culler, Paula E. Hartman-Stein - The University of Akron</i></p>	<p><b>Education</b> <i>Chair: Thomas P. Warren</i></p> <p>Applying Q-Sort Factors on Educators Epistemologies to the Technological Pedagogical Content Knowledge (TPACK) Framework <i>John B. Nicholas - The University of Akron</i></p> <p>Perspectives From The Dark Side: How Faculty Who Educate Future University Administrators View Other Faculty <i>Linnea Stafford - Kent State University</i></p> <p>Early College High School Philosophy and Policy: How Q-Methodology Reveals Form, Process, and Leadership <i>Thomas P. Warren - North Carolina State University</i></p>
12.15-1.30pm	<i>Lunch (on your own)</i>		
1.30-3.00pm <b>Plenary Session</b>	<b>Return to Basics</b> <i>Steven R. Brown, Kent State University</i>		
3.00-3.15pm	<i>Coffee break</i>		
3.15-4.45pm <b>Simultaneous Panels 7</b>	<p><b>Education</b> <i>Chair: John B. Nicholas</i></p> <p>Secondary School Science Teachers' Understanding of Nature of Science: A Study Using Q Methodology <i>Gunkut Mesci, William W. Cobern - Western Michigan University</i></p> <p>Determining University Perspectives and Consensus Regarding the Creation of a STEM Academy <i>Susan Ramlo, John B. Nicholas - The University of Akron</i></p> <p>Faculty and Student Perspectives on What Helps Counselor Education Doctoral Students towards Program Completion <i>Eric R. Baltrinic, Jennifer A. Waugh, Steven R. Brown - Kent State University</i></p>	<p><b>Leadership</b> <i>Chair: Diane Montgomery</i></p> <p>Co-operative leadership subjectivities <i>Ragnvald Kvalsund, Eleanor Allgood - The Norwegian University of Science and Technology</i></p> <p>Chief Executive Viewpoints on Succession Planning in Medium-tier Financial Institutions <i>William G. Dean; Diane Montgomery, Karen Bammel, Leslie A. Miller - University of Phoenix, Oklahoma State University, Capella University</i></p> <p>A Study of Bureaupathologies in Taiwan: What are Cured by the NPM Reform Initiatives? <i>Kai-Hung Fang, Milan Tung-Wen Sun Shih - Hsin University and National Chi Nan University, Taiwan</i></p>	
4.45-6.15pm	<b>ISSSS Business Meeting</b>		
7.30pm	<i>Banquet, Waterfront Room</i>		

*Program of the 28th Annual ISSSS Q methodology Conference  
Pittsburgh, PA - 5-8 September 2012*

**Saturday, 8 September**

	<b>Elwood I</b>	<b>Elwood II</b>	<b>Stoops Ferry</b>
9.00-10.30am <b>Simultaneous Panels 8</b>	<p><b>Education</b> <i>Chair: Job van Exel</i></p> <p>Examining the Guidelines for Assessment and Instruction in Statistics Education in Relation to Teaching Styles Priorities in Introductory Statistics Courses <i>Kristin R. Woods - Oklahoma State University</i></p> <p>Using identity styles to understand graduate students' views of statistics courses: A Q method study <i>Krista Schumacher - Oklahoma State University</i></p> <p>Statistics Anxiety from the Standpoint of the Statistically Anxious: A Comparison of Q-technique and Likert Formats <i>Jennifer Mellott, Steven R. Brown - Kent State University</i></p>	<p><b>Agriculture</b> <i>Chair: Diane Montgomery</i></p> <p>Orchard Pesticide Safety: Stakeholder Views from Washington State <i>Nadine Lehrer - Washington State University</i></p> <p>Innovation acceptability in low input and organic dairy supply chains <i>Raffaele Zanolì, Serena Mandolesi, Simona Naspetti, Phillipa Nicholas - Università Politecnica delle Marche, Aberystwyth University</i></p> <p>African American Perceptions of Agricultural Careers Through the Lens of the Holistic Development Theory <i>Marshall A. Baker, Diane Montgomery - Oklahoma State University</i></p>	<p><b>Education</b> <i>Chair: Linda Collins</i></p> <p>Profile in Practice: A Staff's Views of IB Learner Profile Attributes in School Practices <i>L. Collins, K. Still, J. Gordon, L. Vargo, R. Abate - The University of Akron, Cleveland State University</i></p> <p>Ready or not, here comes the TPA: Teacher candidates' perceptions of their preparedness for the Teacher Performance Assessment <i>Jacki Gordon, Linda Collins, Lynn Kline - University of Akron</i></p> <p>Preschool teachers' perspectives of their own classroom environments based upon CLASS observation criteria <i>Lisa Lenhart, Linda Collins, Lori Vargo - The University of Akron</i></p>
10.30-10.45am	<i>Coffee Break</i>		
10.45-12.15pm <b>Panel of Experts</b>	<p>Susan Ramlo, <i>The University of Akron</i> (chair) Steve Brown, <i>Kent State University</i> Dan Thomas, <i>Wartburg College</i> Diane Montgomery, <i>Oklahoma State University</i></p>		
12.15-2.00pm	<i>Lunch (on your own)</i>		
6.00pm	<i>Baseball Game (meet at hotel entrance for transportation)</i>		

**Acknowledgement**

I would like to thank Noori Akhtar-Danesh, Eliane Azzari, Rachel Baker, Bob Braswell, Liwen Chen, Perry Gross, Amy Hogan, Stephen Jeffares, Helen Mason, Diane Montgomery, John Nicholas, Jose A. Quiles, Sue Ramlo, Jim Rhoads, Thomas Warren and Jason Zenor for their valuable contribution as members of the abstracts review committee, Rachel Baker and Stephen Jeffares for sharing their experience and materials from last year's conference, Mark Popovich and Jim Rhoads for their indispensable support in getting this done, Amy Hogan and Rick Hoodenpyle for their great assistance with the website, and all session chairs and presenters for contributing to this exciting program!

Job van Exel, *program chair*